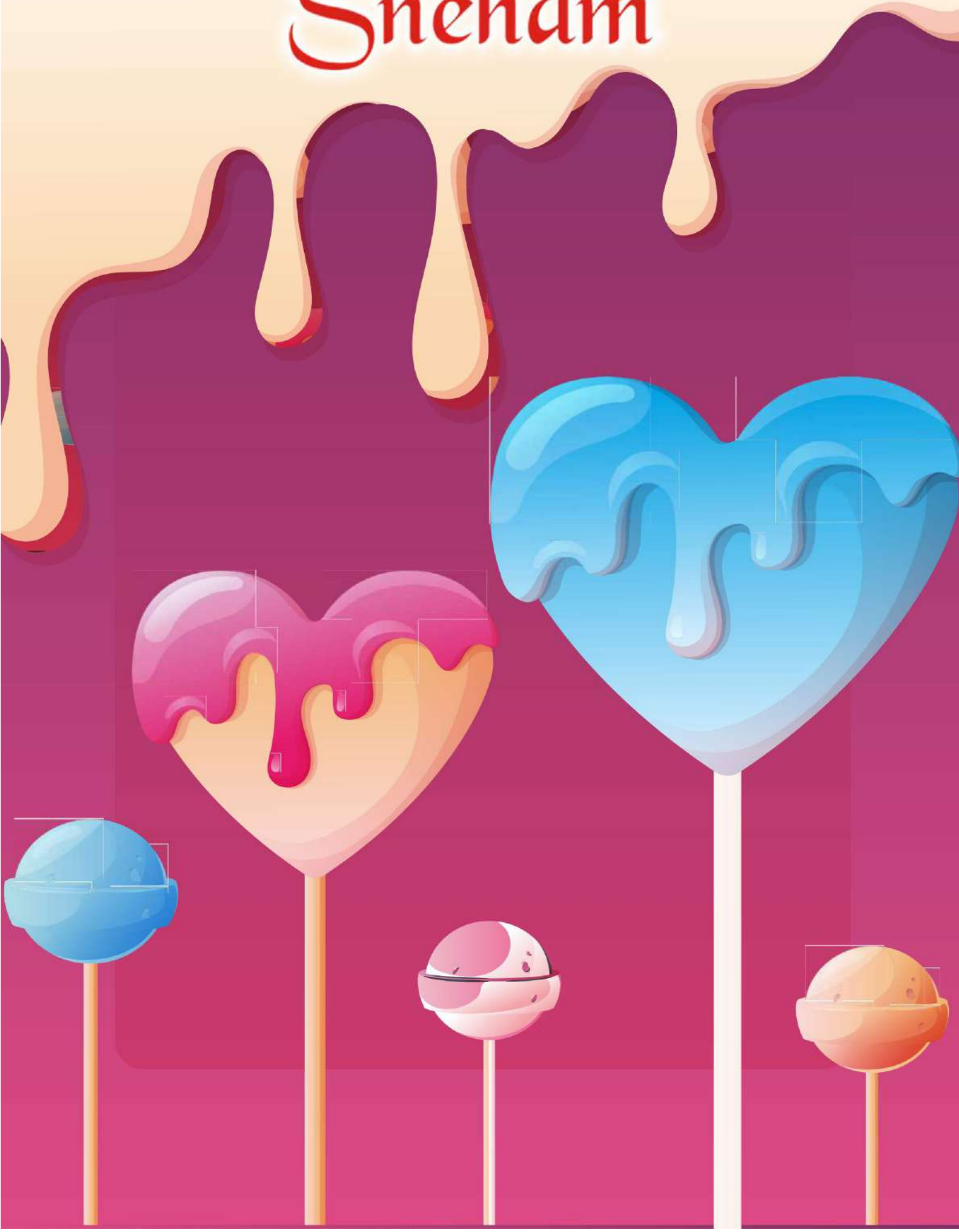


Sneham



OUR PRODUCTS





**ASSORTED PACK
FRUIT FLAVOURED
BUBBLE GUM LOLLIPOP**



*It's a delicious strawberry flavored lollipop
Just pop it in and enjoy the magic.*

*A magical assortment of delicious
fruit flavored lollipop's just enjoy them all.*

Pack	Unit Wt	Pcs Per Pack	Weight Per pack	Packs Per Carton	Carton Dimensions in MM	CBM
Jar	8.2 g	110 Pcs	902 g	12 Jars	455 x 420 x 218	0.042
ar (Dome Cap)	8.2 g	110 Pcs	902 g	12 Jars	455 x 420 x 247	0.047
Polybag	8.2 g	50 Pcs	410 g	24 Polybags	420 x 300 x 260	0.033

Pack	Unit Wt	Pcs Per Pack	Weight Per pack	Packs Per Carton	Carton Dimensions in MM	CBM
Pouch Pack	16 g	50 Pcs	800 g	16 Pouches	415 x 330 x 260	0.036



A range of fruity & tangy Lollipop's

Pack	Unit Wt	Pcs Per Pack	Weight Per pack	Packs Per Carton	Carton Dimensions in MM	CBM
Polybag	5.5 g	75 Pcs	413 g	20 Polybags	400 x 320 x 350	0.045

ASSORTED LOLLIPOP

SPECIFICATIONS

- FLAVOUR** : Orange, Pineapple, Greenapple, Mango, Strawberry
- BRAND** : Customized Brand
- PACKING** : Carton Box
- SIZE** : 5gm, 8gm, 10gm, 12gm, 16gm, 17gm, 18gm,
20gm, 25gm
- TYPE** : Bunch wrap & Double twist
- SHAPE** : Round shape.

OPTIONS

- A) Whistle stick B) Gum C) Without Gum

PACKING

- A) Pouch packing B) Jar packing



MILK LOLLIPOP

SPECIFICATIONS

- FLAVOUR** : Milk
- BRAND** : Customized Brand
- PACKING** : Carton Box
- SIZE** : 5gm, 8gm, 10gm, 12gm, 16gm, 17gm, 18gm, 20gm, 25gm
- TYPE** : Bunch wrap & Double twist
- SHAPE** : Round shape.

OPTIONS

- A) Whistle stick B) Gum C) Without Gum

PACKING

- A) Pouch packing B) Jar packing



TONGUE PAINTER LOLLIPOP

SPECIFICATIONS

FLAVOUR : Orange, Pineapple, Greenapple, Mango, Strawberry

BRAND : Customized Brand

PACKING : Carton Box

SIZE : 12gm, 25gm, 28gm

SHAPE : Round shape.



STRAWBERRY LOLLIPOP

SPECIFICATIONS

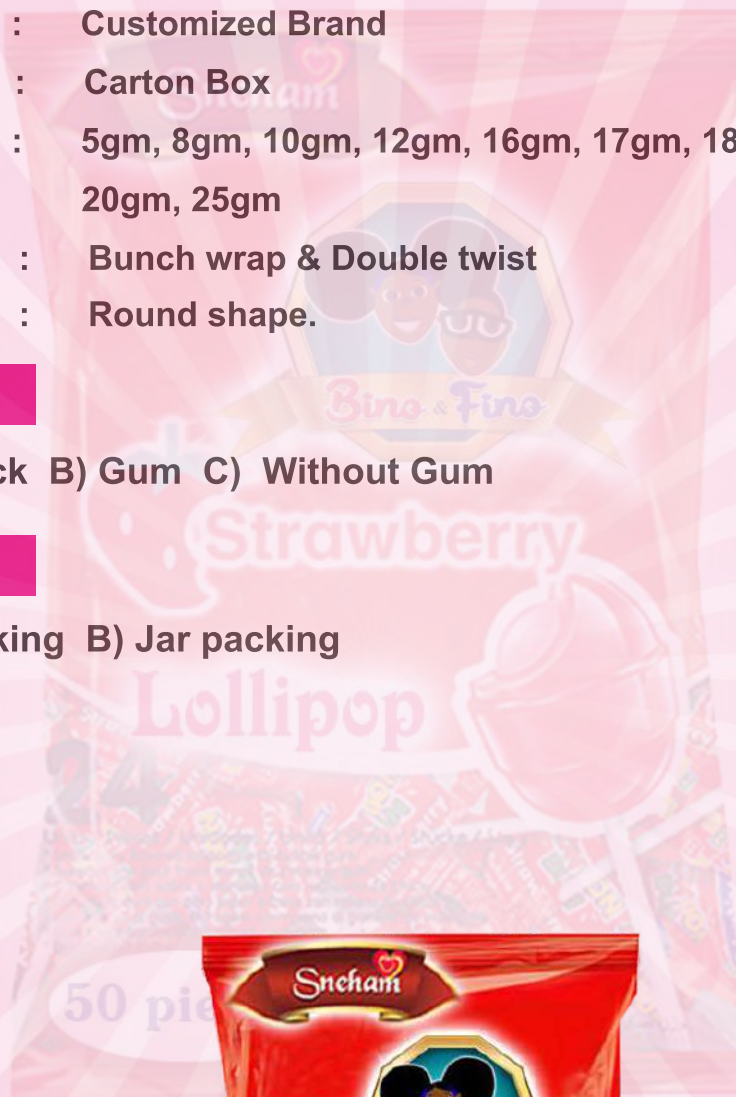
FLAVOUR	:	Strawberry
BRAND	:	Customized Brand
PACKING	:	Carton Box
SIZE	:	5gm, 8gm, 10gm, 12gm, 16gm, 17gm, 18gm, 20gm, 25gm
TYPE	:	Bunch wrap & Double twist
SHAPE	:	Round shape.

OPTIONS

A) Whistle stick B) Gum C) Without Gum

PACKING

A) Pouch packing B) Jar packing



CHOCOLATE LOLLIPOP

SPECIFICATIONS

FLAVOUR	:	Chocolate
BRAND	:	Customized Brand
PACKING	:	Carton Box
SIZE	:	5gm, 8gm, 10gm, 12gm, 16gm, 17gm, 18gm, 20gm, 25gm
TYPE	:	Bunch wrap & Double twist
SHAPE	:	Round shape.

OPTIONS

A) Whistle stick B) Gum C) Without Gum

PACKING

A) Pouch packing B) Jar packing



Sneham



India



+ 91 74180 53336 , +91 78450 63338



+91 96599 99167, +91 83448 53164



www.snehamsnacks.com



marketing@snehamsnacks.com